



# Gen5™ Data Acquisition Module

## OVERVIEW

---

### Abstract

The PLA 3.0 Data Acquisition Module for Gen5 enables users to import measurement values from the Gen5 reader control software (by BioTek Instruments, Inc.) into PLA 3.0 for further analysis. Gen5 is included with many readers from BioTek Instruments.

### Features

- Fast, secure and reliable data transfer from Gen5 to PLA.
- All imported data is fully retraceable (audit trail).
- Compliant with requirements for regulated environments.
- Data can be analyzed with statistical methods not included in the reader control software.

More information on PLA 3.0 Data Acquisition Modules:

[www.bioassay.de/data-acquisition](http://www.bioassay.de/data-acquisition)

## TECHNICAL SPECIFICATION

---

### Type

Data Acquisition Module

### Version

1.2.1 (Build 40)

### System Requirements

- PLA 3.0.4
- Bioassay Package 23 or higher

### Supported Systems

- BioTek Gen5 Microplate Reader Software

### Supported File Formats

- .db
- .xpt

### Supported Languages

English, German

## DELIVERY AND SUPPORT

---

### Release Date

2017/05/17

### Product No.

24034

### Scope of Delivery

- Software (download)
- User manual (PDF)

### Lifecycle

We will provide support for PLA 3.0 and all related modules until March 15, 2024.

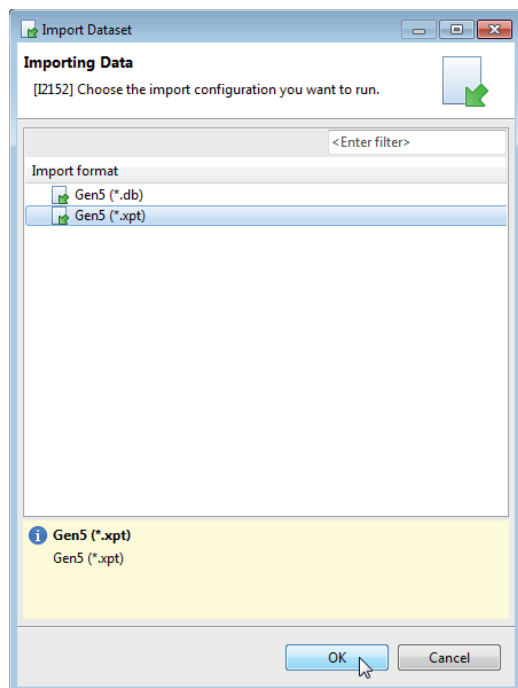
### Support and Upgrades

You have access to our PLA support platform at: [support.bioassay.de](http://support.bioassay.de)

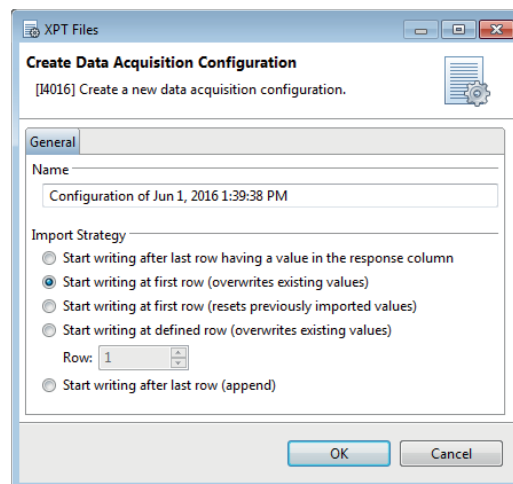
This module is covered by our PLA Support Contract. The first year is included and the contract can be renewed year by year. To find out more about its benefits, please go to: [www.bioassay.de/support-contract](http://www.bioassay.de/support-contract)

## SCREENSHOTS

Choosing the import configuration.



Creating a data acquisition configuration.



Successful acquisition of plate reader measurement values.

