



Bio-Plex® Data Acquisition Module

OVERVIEW

Abstract

The PLA 3.0 Data Acquisition Module for Bio-Plex (Bio-Rad Laboratories, Inc) enables users to import XML-files created with Bio-Plex Manager 4.1 into PLA 3.0 for further analysis.

Features

- Fast, secure and reliable data transfer to PLA.
- All imported data is fully retraceable (audit trail).
- Option to create multiple assays from a single source file.

More information on PLA 3.0 Data Acquisition Modules:

www.bioassay.de/data-acquisition

TECHNICAL SPECIFICATION

Type

Data Acquisition Module

Version

Version 1.2.0 Build 40

System Requirements

- PLA 3.0.4
- Bioassay Package 23 or higher

Supported Systems

- Bio-Plex 100 and 200 systems
- Bio-Plex instruments

Supported File Formats

- .xml

Supported Languages

English, German

DELIVERY AND SUPPORT

Release Date

March 9, 2018

Product No.

24037

Scope of Delivery

- Software (CD or download)
- User manual (PDF)

Lifecycle

We will provide support for PLA 3.0 and all related modules until March 15, 2024.

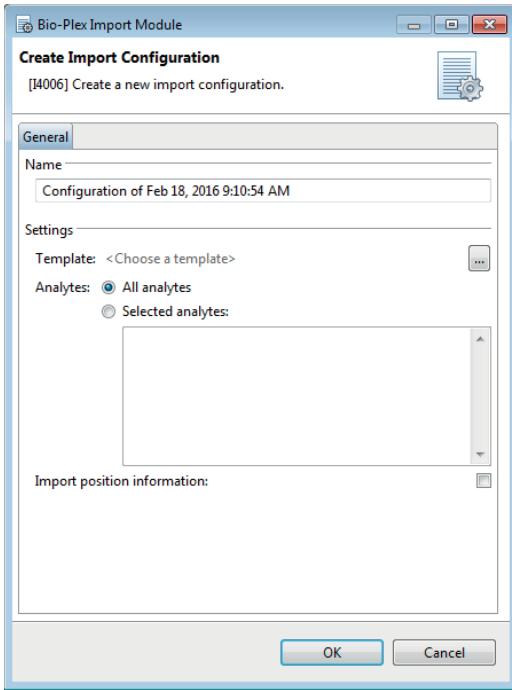
Support and Upgrades

You have access to our PLA support platform at: support.bioassay.de

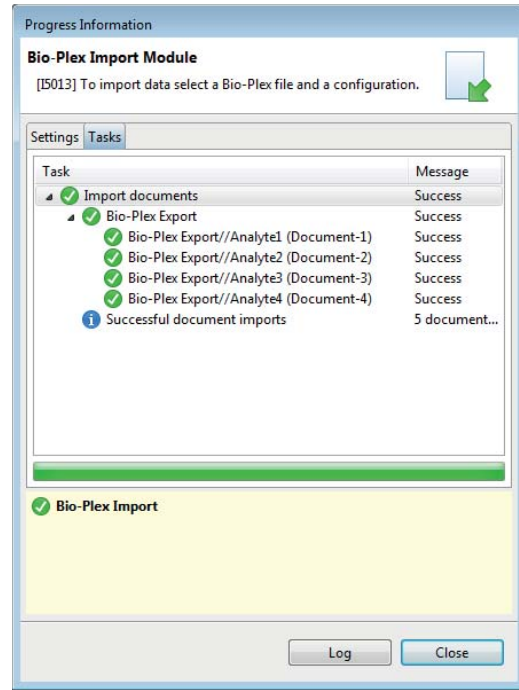
This module is covered by our PLA Support Contract. The first year is included and the contract can be renewed year by year. To find out more about its benefits, please go to: www.bioassay.de/support-contract

SCREENSHOTS

Creating a data acquisition configuration.



Ending the acquisition process successfully.



Viewing the results of the data acquisition process.

