

Microsoft Excel™ Data Acquisition Module

OVERVIEW

Abstract

The PLA 3.0 Data Acquisition Module for Microsoft Excel enables users to import data from Excel sheets into biological assays for further analysis.

Features

- Fast, secure and reliable data import from Excel files.
- Option to save the configuration to repeat the process with the same settings.
- All imported data is fully retraceable (audit trail).
- Fully customizable for import from different sheets, regions.

More information on PLA 3.0 Data Acquisition Modules:

www.bioassay.de/data-acquisition

TECHNICAL SPECIFICATION

Type

Data Acquisition Module

Version

Version 1.2.0 Build 99
(downgrade rights included)

System Requirements

- PLA 3.0.4
- Bioassay Package 23 or higher

Supported Systems

- Microsoft Excel 97 and newer

Supported File Formats

- .xls
- .xlsx

Supported Languages

English, German

DELIVERY AND SUPPORT

Release Date

May 25, 2016

Product No.

24032

Scope of Delivery

- Software (CD or download)
- User manual (PDF)

Lifecycle

We will provide support for PLA 3.0 and all related modules until March 15, 2024.

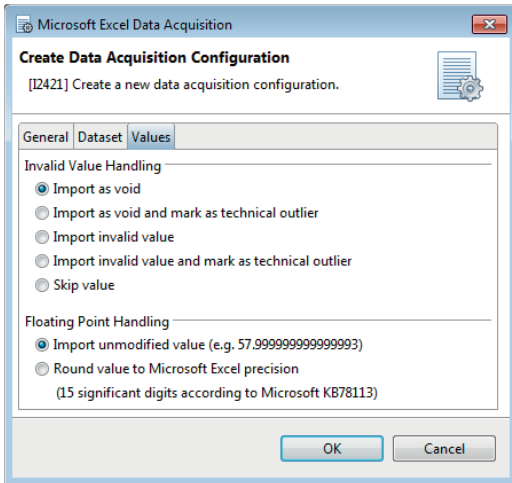
Support and Upgrades

You have access to our PLA support platform at: support.bioassay.de

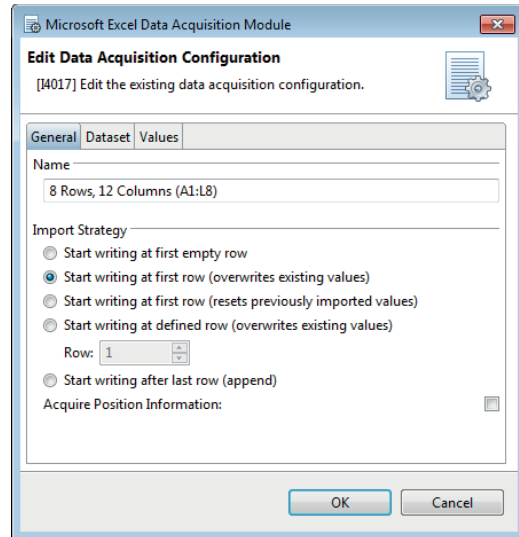
This module is covered by our PLA Support Contract. The first year is included and the contract can be renewed year by year. To find out more about its benefits, please go to: www.bioassay.de/support-contract

SCREENSHOTS

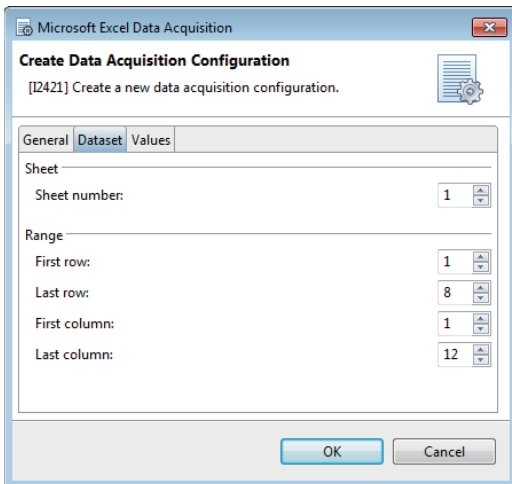
Creating a data acquisition configuration.



Editing the configuration.



Managing the settings.



Successful acquisition of Excel data.

