



# SoftMax® Pro Data Acquisition Module

## OVERVIEW

---

### Abstract

The PLA 3.0 Data Acquisition Module for SoftMax Pro enables users to import measurement values from SoftMax Pro 6.x - 7.x and SoftMax Pro 3.x - 5.x control software (from Molecular Devices, LLC) into biological assays for further analysis.

### Features

- Fast, secure and reliable data transfer from plate reader to PLA.
- All imported data is fully retraceable (audit trail).
- Compliant with requirements for regulated environments.
- Data can be analyzed with statistical methods not included in the standard SoftMax plate reader software.

More information on PLA 3.0 Data Acquisition Modules:

[www.bioassay.de/data-acquisition](http://www.bioassay.de/data-acquisition)

## TECHNICAL SPECIFICATION

---

### Type

Data Acquisition Module

### Version

Version 1.5.0 build 192 (SR1)  
(downgrade rights included)

### System Requirements

- PLA 3.0.4
- Bioassay Package 23 or higher

### Supported Systems

- SoftMax® Pro 3.x - 7.x by Molecular Devices, LLC

### Supported File Formats

- SoftMax Pro 6.x - 7.x .xml
- SoftMax Pro 3.x - 5.x .eda, .pda

### Supported Languages

English, German

## DELIVERY AND SUPPORT

---

### Release Date

May 15, 2018

### Product No.

24031

### Scope of Delivery

- Software (CD or download)
- User manual (PDF)

### Lifecycle

We will provide support for PLA 3.0 and all related modules until March 15, 2024.

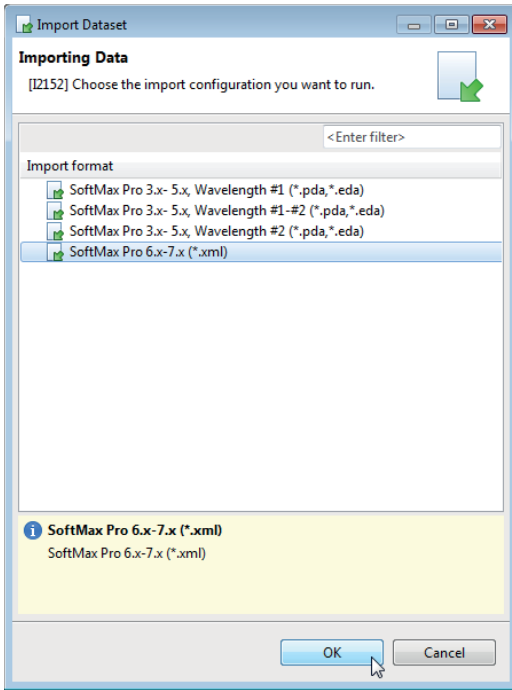
### Support and Upgrades

You have access to our PLA support platform at: [support.bioassay.de](http://support.bioassay.de)

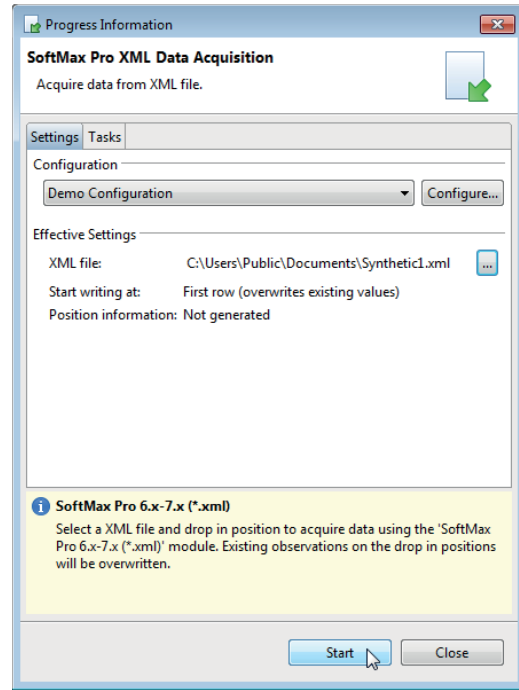
This module is covered by our PLA Support Contract. The first year is included and the contract can be renewed year by year. To find out more about its benefits, please go to: [www.bioassay.de/support-contract](http://www.bioassay.de/support-contract)

SCREENSHOTS

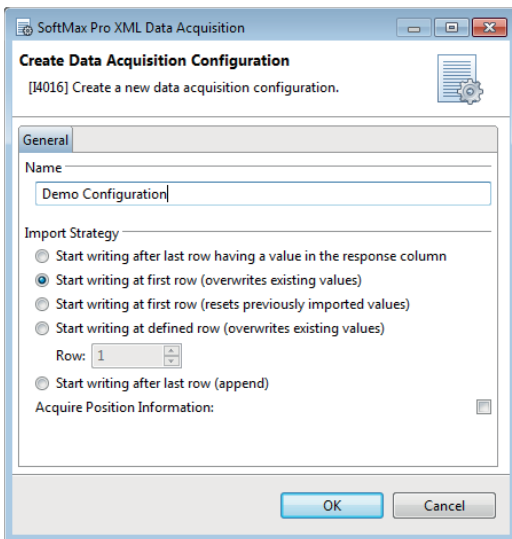
Starting the data acquisition process.



Selecting the source file.



Creating a data acquisition configuration.



Successful acquisition of plate reader measurement values.

