

Text Data Acquisition Module

OVERVIEW

Abstract

The PLA 3.0 Data Acquisition Module for text enables users to import data from text files into biological assays for further analysis.

Features

- Fast, secure and reliable data import from text files.
- Option to save the configuration to repeat the process with the same settings.
- All imported data is fully retraceable (audit trail).

More information on PLA 3.0 Data Acquisition Modules:

www.bioassay.de/data-acquisition

TECHNICAL SPECIFICATION

Type

Data Acquisition Module

Version

Version 1.2.0 Build 129
(downgrade rights included)

System Requirements

- PLA 3.0.4
- Bioassay Package 23 or higher

Supported Systems

- Programms, that export to text

Supported File Formats

- .csv
- .tsv
- other proprietary text formats

Supported Languages

English, German

DELIVERY AND SUPPORT

Release Date

May 25, 2016

Product No.

24033

Scope of Delivery

- Software (CD or download)
- User manual (PDF)

Lifecycle

We will provide support for PLA 3.0 and all related modules until March 15, 2024.

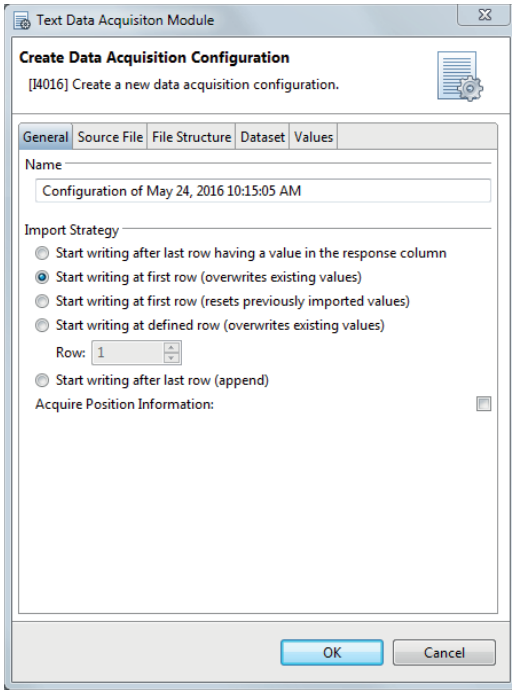
Support and Upgrades

You have access to our PLA support platform at: support.bioassay.de

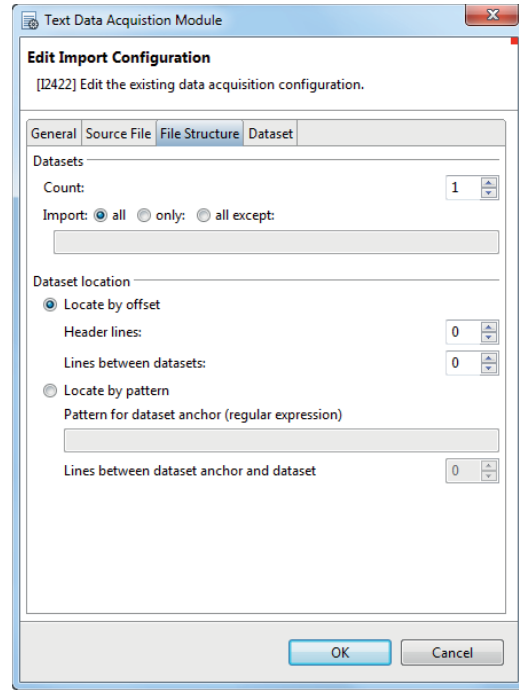
This module is covered by our PLA Support Contract. The first year is included and the contract can be renewed year by year. To find out more about its benefits, please go to: www.bioassay.de/support-contract

SCREENSHOTS

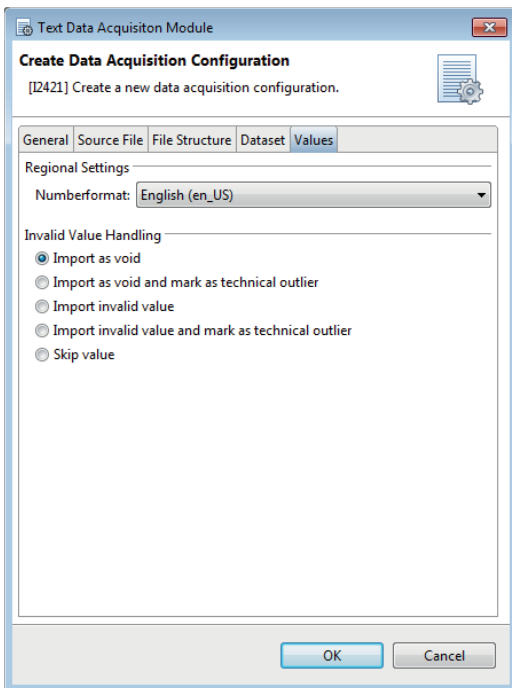
Creating a data acquisition configuration.



Specifying the file structure.



Handling invalid values.



Successful acquisition of data from a text file.

