



# Magellan™ Data Acquisition Module

## OVERVIEW

---

### Abstract

The PLA 3.0 Data Acquisition Module for Magellan (Tecan Group Ltd.) enables users to import measurement values from the Tecan Magellan software into PLA 3.0 for further analysis.

### Features

- Fast, secure and reliable data transfer to PLA.
- All imported data is fully retraceable (audit trail).
- Compliant with requirements for regulated environments.

More information on PLA 3.0 Data Acquisition Modules:

[www.bioassay.de/data-acquisition](http://www.bioassay.de/data-acquisition)

## TECHNICAL SPECIFICATION

---

### Type

Data Acquisition Module

### Version

1.3.1 (Build 182)

### System Requirements

- PLA 3.0.4
- Bioassay Package 23 or higher

### Supported Systems

- Supports Tecan microplate readers (Magellan Standard, Magellan Tracker) with Tecan Magellan 6.60 or higher and Tecan SparkControl™ Magellan 2.2 or higher

### Supported File Formats

- .wsp
- .mth

### Supported Languages

English, German

## DELIVERY AND SUPPORT

---

### Release Date

2018/06/29

### Product No.

24035

### Scope of Delivery

- Software (download)
- User manual (PDF)

### Lifecycle

We will provide support for PLA 3.0 and all related modules until March 15, 2024.

### Support and Upgrades

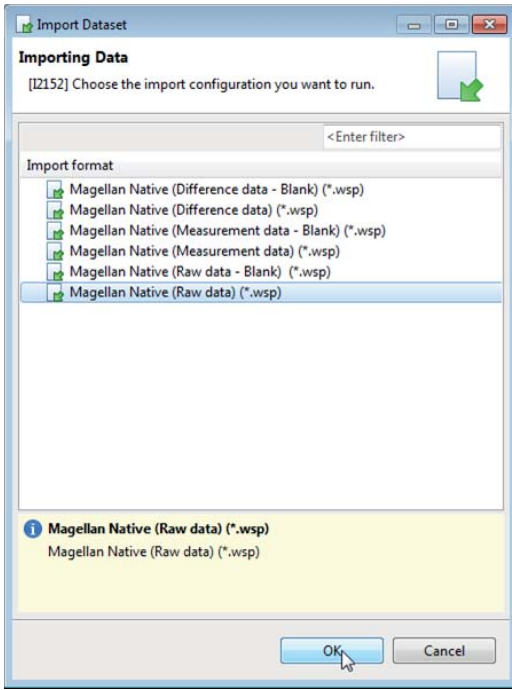
You have access to our PLA support platform at: [support.bioassay.de](http://support.bioassay.de)

This module is covered by our PLA Support Contract. The first year is included and the contract can be renewed year by year. To find out more about its benefits, please go to: [www.bioassay.de/support-contract](http://www.bioassay.de/support-contract)

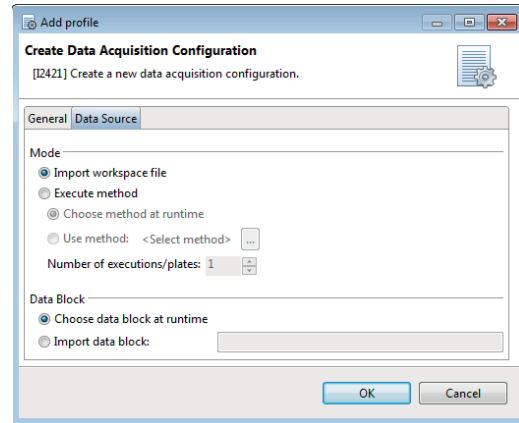
---

SCREENSHOTS

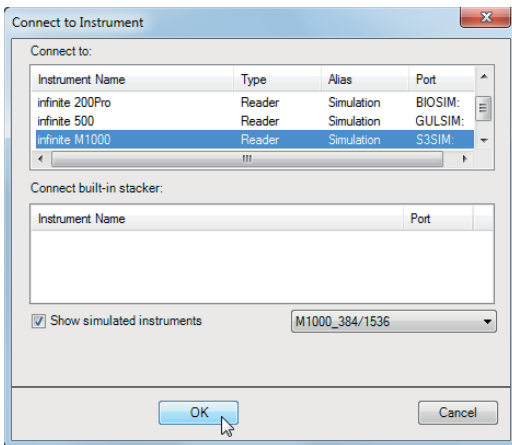
Choosing the import configuration.



Creating a data acquisition configuration.



Connecting to instrument.



Data acquisition successful.

