



SoftMax® Pro Data Acquisition Module

OVERVIEW

Abstract

The PLA 3.0 Data Acquisition Module for SoftMax Pro enables users to import measurement values from SoftMax Pro 6.x - 7.x and SoftMax Pro 3.x - 5.x control software (from Molecular Devices, LLC) into biological assays for further analysis.

Features

- Fast, secure and reliable data transfer from plate reader to PLA.
- All imported data is fully retraceable (audit trail).
- Compliant with requirements for regulated environments.
- Data can be analyzed with statistical methods not included in the standard SoftMax plate reader software.

More information on PLA 3.0 Data Acquisition Modules:

www.bioassay.de/data-acquisition

TECHNICAL SPECIFICATION

Type

Data Acquisition Module

Version

1.5.0 SR1 (Build 192)

System Requirements

- PLA 3.0.4
- Bioassay Package 23 or higher

Supported Systems

- SoftMax® Pro 3.x - 7.x by Molecular Devices, LLC

Supported File Formats

- SoftMax Pro 6.x - 7.x .xml
- SoftMax Pro 3.x - 5.x .eda, .pda

Supported Languages

English, German

DELIVERY AND SUPPORT

Release Date

2018/06/15

Product No.

24031

Scope of Delivery

- Software (download)
- User manual (PDF)

Lifecycle

We will provide support for PLA 3.0 and all related modules until March 15, 2024.

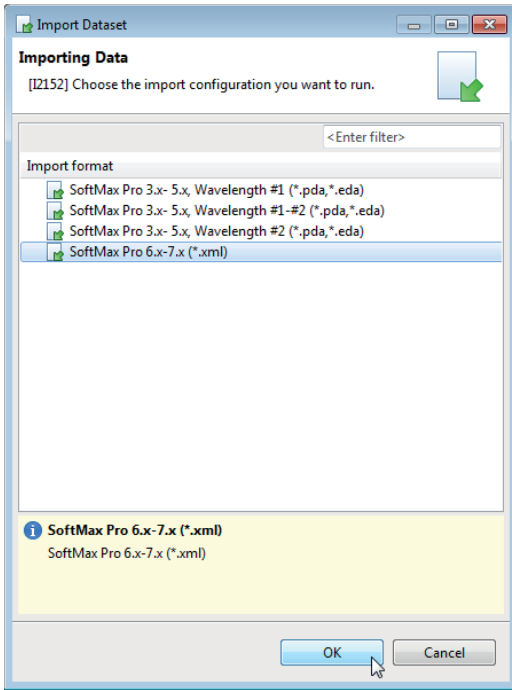
Support and Upgrades

You have access to our PLA support platform at: support.bioassay.de

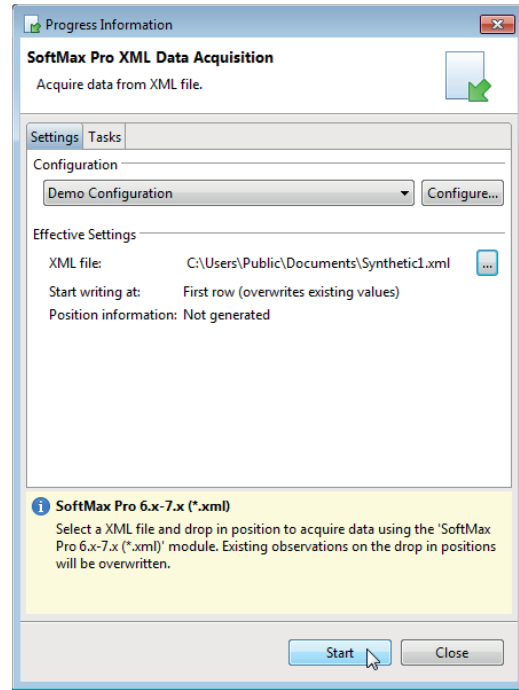
This module is covered by our PLA Support Contract. The first year is included and the contract can be renewed year by year. To find out more about its benefits, please go to: www.bioassay.de/support-contract

SCREENSHOTS

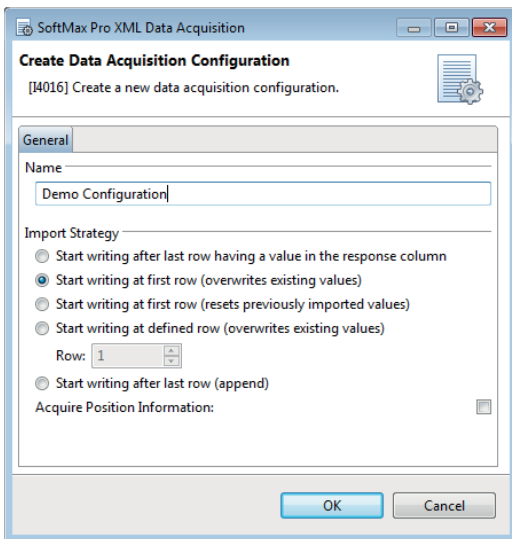
Starting the data acquisition process.



Selecting the source file.



Creating a data acquisition configuration.



Successful acquisition of plate reader measurement values.

