

# Text Data Acquisition Module

## OVERVIEW

---

### Abstract

The PLA 3.0 Data Acquisition Module for text enables users to import data from text files into biological assays for further analysis.

### Features

- Fast, secure and reliable data import from text files.
- Option to save the configuration to repeat the process with the same settings.
- All imported data is fully retraceable (audit trail).

More information on PLA 3.0 Data Acquisition Modules:

[www.bioassay.de/data-acquisition](http://www.bioassay.de/data-acquisition)

## TECHNICAL SPECIFICATION

---

### Type

Data Acquisition Module

### Version

1.2.0 (Build 129)

### System Requirements

- PLA 3.0.4
- Bioassay Package 23 or higher

### Supported Systems

- Programms, that export to text

### Supported File Formats

- .csv
- .tsv
- other proprietary text formats

### Supported Languages

English, German

## DELIVERY AND SUPPORT

---

### Release Date

2016/05/25

### Product No.

24033

### Scope of Delivery

- Software (download)
- User manual (PDF)

### Lifecycle

We will provide support for PLA 3.0 and all related modules until March 15, 2024.

### Support and Upgrades

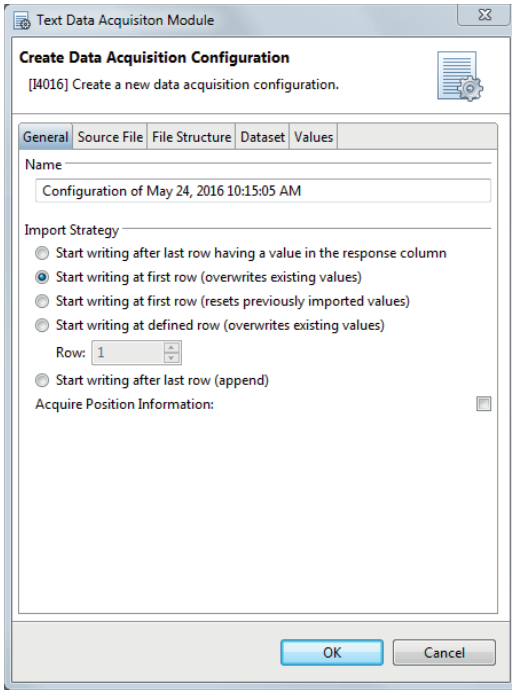
You have access to our PLA support platform at: [support.bioassay.de](http://support.bioassay.de)

This module is covered by our PLA Support Contract. The first year is included and the contract can be renewed year by year. To find out more about its benefits, please go to: [www.bioassay.de/support-contract](http://www.bioassay.de/support-contract)

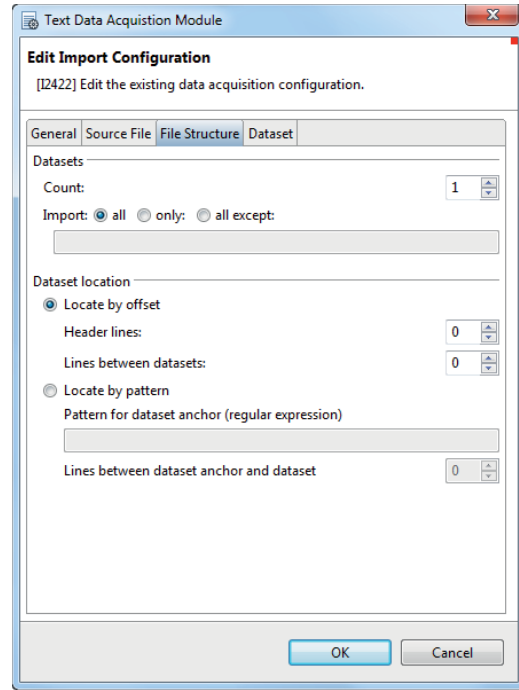
---

**SCREENSHOTS**

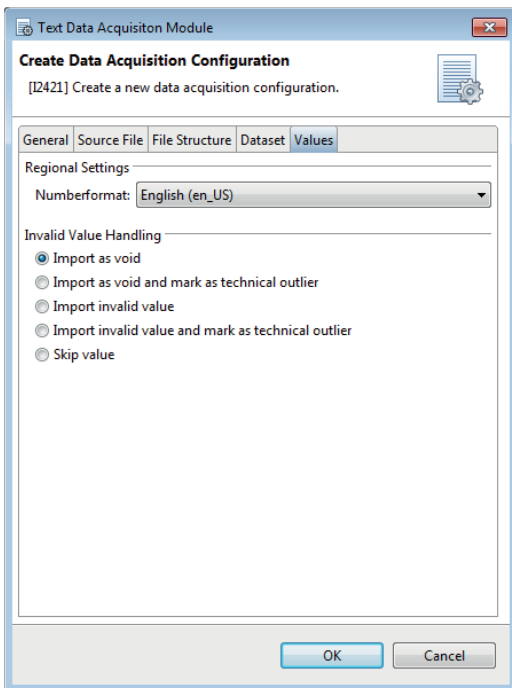
Creating a data acquisition configuration.



Specifying the file structure.



Handling invalid values.



Successful acquisition of data from a text file.

