

Click here if this newsletter isn't displayed correctly.



Released Control Chart Package (technology preview)

Next PLA 3.0 Webinar & Trainings



// Aug 25, Europe - Middle East - Africa - Asia - Oceania
 // Sep 02, The Americas - Europe
 // Sep 03, Europe - Middle East - Africa - Asia - Oceania



// Oct 13, Asia - Oceania
 // Oct 14, Europe - Middle East - Africa
 // Oct 14, The Americas



Last seats available - Book now
 // Aug 24 - 25, The Americas
 // Aug 31 - Sep 01, Europe - Middle East - Africa
 // Nov 16-17, Asia - Oceania

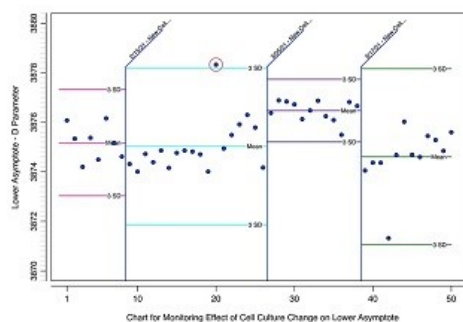
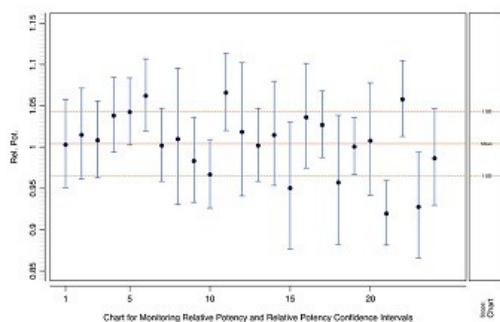
For further dates and times, [please check our Webinar & Trainings Calendar below](#)

Dear Max,

In this newsletter

- [Released Control Chart Package \(technology preview\)](#)
- [Webinar & Trainings Calendar](#)
- [Meet us at](#)
- [Latest PLA 3.0 Releases](#)

Released Control Chart Package (technology preview)



Plotting relative potency with confidence intervals as bars

Visualization of events, including the detection of out-of-control data based on Nelson rule 1 (beyond 3*SD)

The Control Chart function is now delivered as a Package to the PLA 3.0.5 framework.

The Control Chart Package* allows sophisticated statistical process control by plotting Shewhart I-Charts as recommended in the USP <1010>. Out-of-control data can be detected by defining upper / lower control limits and control rules (Western Electric, Nelson, and user-defined). A status display provides feedback about the impact of a rule violation. Optional features include events to mark changes in the process, sidecharts to contain basic statistics in a box plot, the creation of subcharts for a specific range, and confidence intervals. Moreover, a secondary column can be used to factorize the data series e.g. by an operator. Measurements can be aggregated directly from independent assay runs or from manual input.

[Read more about the Control Chart Package](#)

**Please note: The current version of the package is a technology preview. It has not been released yet and has not been finally qualified for use. [How to activate the technology preview?](#)*

Best regards
Mathias von Gellhorn
Marketing Manager

Stegmann Systems GmbH, Raiffeisenstr. 2, 63110 Rodgau, Germany
Phone: +49 (6106) 77010-0, Fax: +49 (6106) 77010-190
www.stegmannsystems.com

Current conferences

- BEBPA's 14th Annual EUR Bioassay Conference
September 20-23, 2021 | Virtual - [Book now](#)
- 2021 Immunogenicity Bioassay Summit
October 18-22, 2021 | Washington, D.C. USA

If you wish to meet one of our representatives, please contact our Sales Team by [mail](#).

Webinar & Trainings Calendar



// Aug 25, Europe - Middle East - Africa - Asia - Oceania, 1.25h

Frankfurt 8 a.m. / Moscow 9 a.m. / New Delhi 11:30 a.m. / Beijing 2 p.m. / Sydney 4 p.m.

// Sep 02, The Americas - Europe, 1.25h

San Francisco 8 a.m. / Boston 11 a.m. / São Paulo 12 a.m. / Frankfurt 5 p.m.

// Sep 03, Europe - Middle East - Africa - Asia - Oceania, 1.25h

Frankfurt 8 a.m. / Moscow 9 a.m. / New Delhi 11:30 a.m. / Beijing 2 p.m. / Sydney 4 p.m.

// Sep 08, Europe - Middle East - Africa - Asia - Oceania, 1.25h

Frankfurt 8 a.m. / Moscow 9 a.m. / New Delhi 11:30 a.m. / Beijing 2 p.m. / Sydney 4 p.m.

// Sep 09, The Americas - Europe, 1.25h

San Francisco 8 a.m. / Boston 11 a.m. / São Paulo 12 a.m. / Frankfurt 5 p.m.

// Oct 13, Asia - Oceania, 3.5h

New Delhi 8:30 a.m. / Beijing 11 a.m. / Sydney 2 p.m.

// Oct 14, Europe - Middle East - Africa, 3.5h

Frankfurt 9 a.m. / Moscow 10 a.m. / New Delhi 12:30 p.m.

// Oct 14, The Americas, 3.5h

San Francisco 8 a.m. / Boston 11 a.m. / São Paulo 12 p.m.

// Dec 07, Asia - Oceania, 3.5h

New Delhi 8:30 a.m. / Beijing 11 a.m. / Sydney 2 p.m.

// Dec 08, Europe - Middle East - Africa, 3.5h

Frankfurt 9 a.m. / Moscow 10 a.m. / New Delhi 12:30 p.m.

// Dec 08, The Americas, 3.5h

San Francisco 8 a.m. / Boston 11 a.m. / São Paulo 12 p.m.

// Aug 24 - 25, The Americas, 6h

San Francisco 8 a.m. / Boston 11 a.m. / São Paulo 12 p.m.

// Aug 31 - Sep 01, Europe - Middle East - Africa, 6h

Frankfurt 9 a.m. / Moscow 10 a.m. / New Delhi 12:30 p.m.

// Nov 16 - 17, Asia - Oceania, 6h

New Delhi 8:30 a.m. / Beijing 11 a.m. / Sydney 2 p.m.

// Nov 23 - 24, The Americas, 6h

San Francisco 8 a.m. / Boston 11 a.m. / São Paulo 1 p.m.

// Nov 30 - Dec 01, Europe - Middle East - Africa, 6h

Frankfurt 9 a.m. / Moscow 11 a.m. / New Delhi 1:30 p.m.

// Aug 19, Asia - Oceania, 6h

New Delhi 7:30 a.m. / Beijing 10 a.m. / Sydney 12 p.m.

// Aug 26, The Americas, 6h

San Francisco 8 a.m. / Boston 11 a.m. / São Paulo 12 p.m.

// Sep 02, Europe - Middle East - Africa, 6h

Frankfurt 9 a.m. / Moscow 10 a.m. / New Delhi 12:30 p.m.

// Nov 18, Asia - Oceania, 6h

New Delhi 8:30 a.m. / Beijing 11 a.m. / Sydney 2 p.m.

// Nov 25, The Americas, 6h

San Francisco 8 a.m. / Boston 11 a.m. / São Paulo 1 p.m.

// Dec 02, Europe - Middle East - Africa, 6h
Frankfurt 9 a.m. / Moscow 11 a.m. / New Delhi 1:30 p.m.

Corporate Training

Are you interested in a corporate in-house training? Please contact us via [mail](#) or visit our [website](#).

Latest Releases

PLA 3.0.5 (build 816)

Released: 2020-12-10

Control Chart Package 1.0.0 (technology preview)

Released: 2021-08-16

Dose-Response Analysis Package 1.0.0

Released: 2020-12-10

Biological Assay Package 26 SR1 (build 1043)

Released: 2019-05-17

PLA 2.1 (build 605 SR1)

Released: 2019-09-30

Download

Add-ons for PLA 3.0

PLA is an extensible platform. The user has several options to customize this platform and extend its functionality with add-ons. Go to our [website](#) and find it under 'PLA 3.0'.



STEGMANN SYSTEMS GmbH
Raiffeisenstr. 2 // C1, C2
63110 Rodgau, Germany
Phone: + 49 6106 77010 - 0
Fax: + 49 6106 77010 - 190
info@stegmannsystems.com
www.stegmannsystems.com

Commercial Register/Handelsregister Offenbach, HRB 43033
CEO/Geschäftsführer: Dr. Ralf Stegmann

[Imprint](#)
[Privacy Statement](#)

[Click here](#) - if you don't want to receive our newsletters anymore.