

# Regression Parameters 4PL (A, D, B and C)

Document-Id: Document-81 (Revision:9)  
Document type: Control Chart/14  
Last modified: 24.03.2020 10:45:10  
Database: PLA 3.0.4 BP26  
Database GUID: a23398ab-7853-4e3d-aa1a-5bedeec03463

## Calculation

Calculation performed: 24.03.2020 10:45:10, Dr. Matthias Schmitt (PLA 3.0.4 Build 762, nbmsc04, 10014)  
Report generated: 24.03.2020 10:45:20, Dr. Matthias Schmitt (PLA 3.0.4 Build 762, nbmsc04, 10014)

## Signatures

..... Responsibility Review Approval .....

## Table of contents

Chart: Parameter Chart: Upper Asymptote (A)..... 2  
Chart: Parameter Chart: Lower Asymptote (D)..... 3  
Chart: Parameter Chart: Slope (B)..... 4  
Chart: Parameter Chart: Inflection Point (C)..... 5  
Data table..... 6

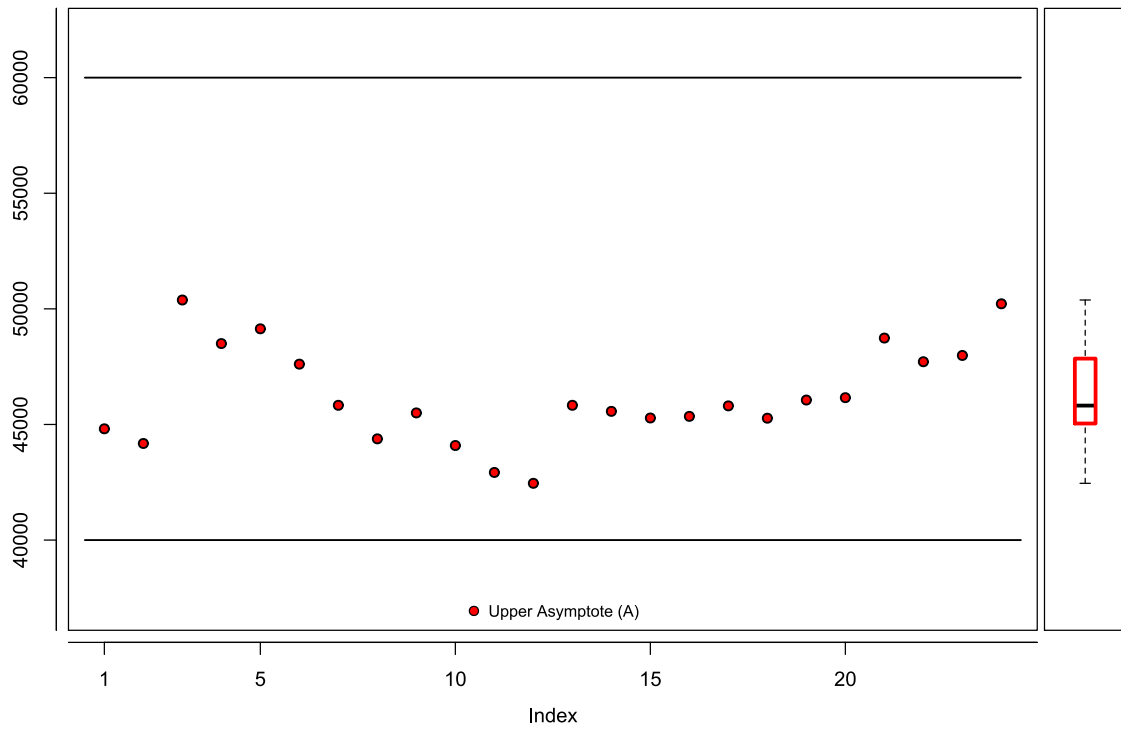


DOCUMENT-81

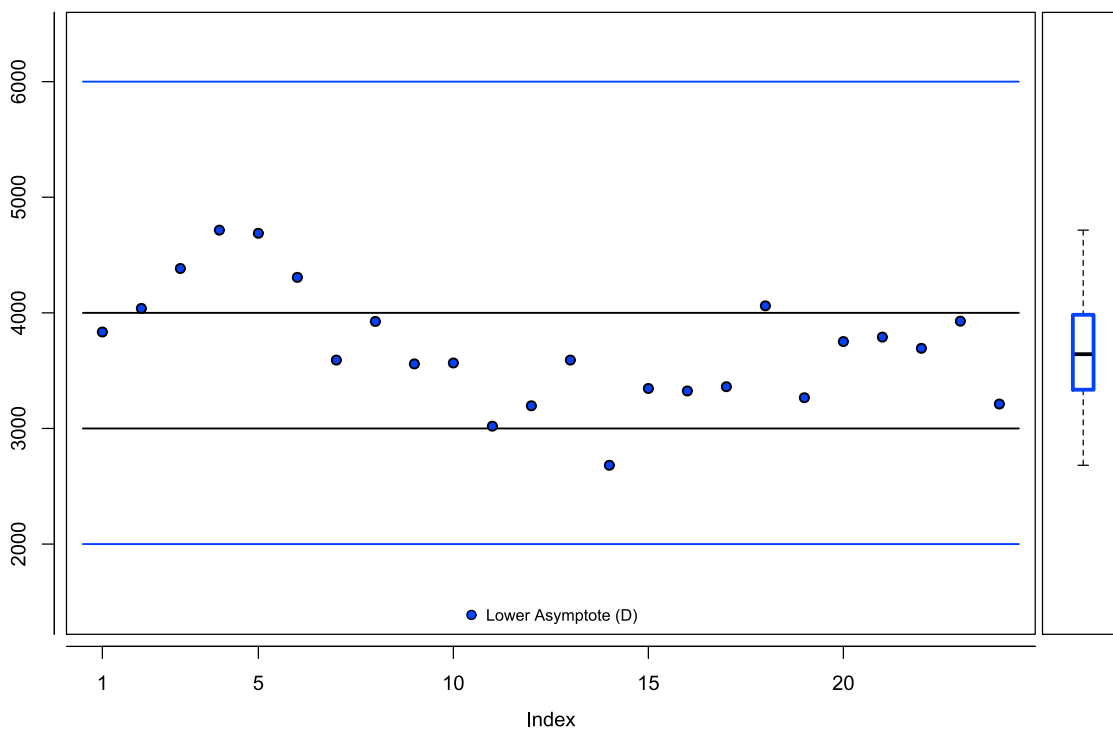


A23398AB-7853-4E3D-AA1A-5BEDEEC03463

### Chart: Parameter Chart: Upper Asymptote (A)



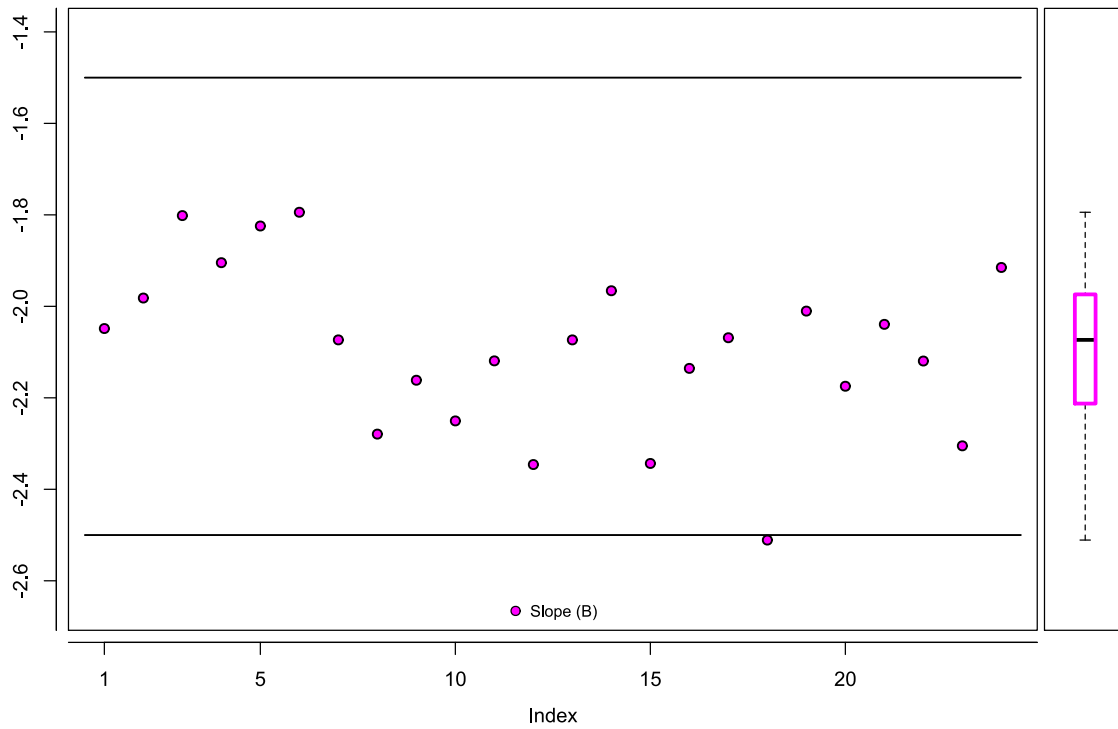
### Chart: Parameter Chart: Lower Asymptote (D)



### Limit violations

Index	Date	Value	Limit violation	Control limit, Severity
2	06.05.2013 09:39:45	4038.4708	Lower Asymptote (D)	CL-1, Information
3	06.05.2013 09:39:45	4383.7142	Lower Asymptote (D)	CL-1, Information
4	06.05.2013 09:39:45	4715.4377	Lower Asymptote (D)	CL-1, Information
5	06.05.2013 09:39:45	4688.3254	Lower Asymptote (D)	CL-1, Information
6	06.05.2013 09:39:45	4306.9880	Lower Asymptote (D)	CL-1, Information
18	06.05.2013 09:39:45	4060.9214	Lower Asymptote (D)	CL-1, Information
14	06.05.2013 09:39:45	2681.5679	Lower Asymptote (D)	CL-1, Information

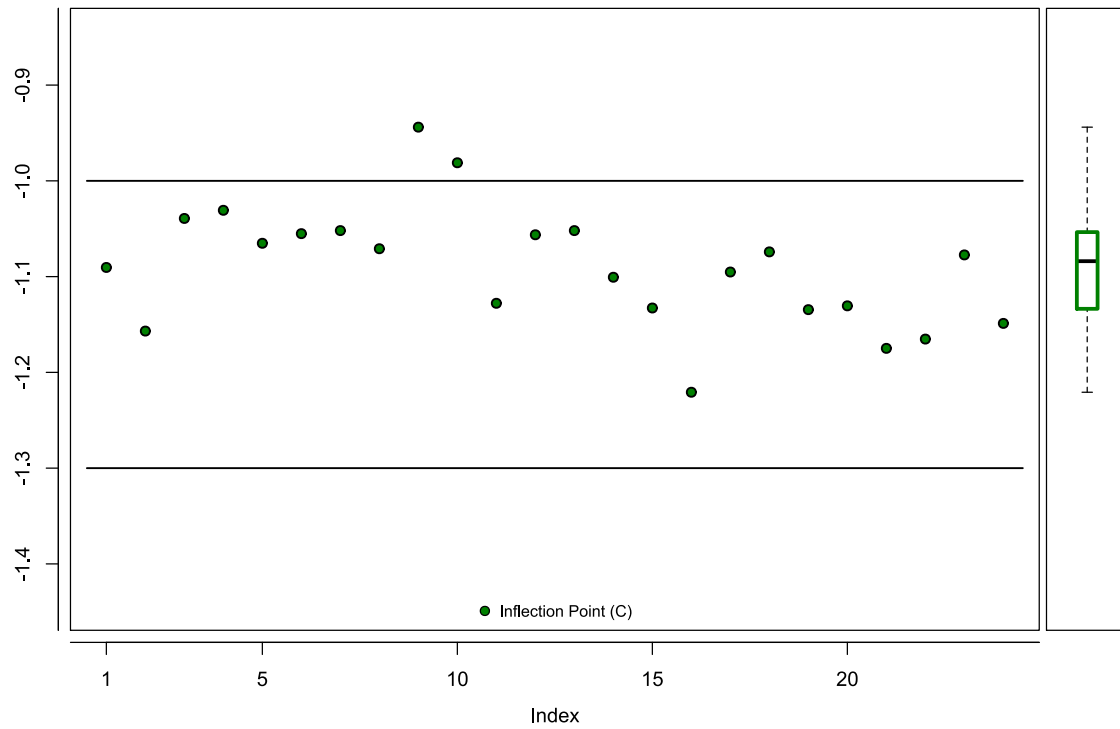
### Chart: Parameter Chart: Slope (B)



### Limit violations

Index	Date	Value	Limit violation	Control limit, Severity
18	06.05.2013 09:39:45	-2.51099	Slope (B)	CL-1, Warning

### Chart: Parameter Chart: Inflection Point (C)



### Limit violations

Index	Date	Value	Limit violation	Control limit, Severity
9	06.05.2013 09:39:45	-0.94393	Inflection Point (C)	CL-1, Warning
10	06.05.2013 09:39:45	-0.98111	Inflection Point (C)	CL-1, Warning

## Data table

Index	Document key: Document title, Section	Date	Upper Asymptote (A)
1	Document-82: [No title], S1	06.05.2013 08:39:45	44812.191
2	Document-83: [No title], S1	06.05.2013 08:39:45	44177.983
3	Document-84: [No title], S1	06.05.2013 08:39:45	50382.534
4	Document-85: [No title], S1	06.05.2013 08:39:45	48499.055
5	Document-86: [No title], S1	06.05.2013 08:39:45	49137.273
6	Document-87: [No title], S1	06.05.2013 08:39:45	47608.498
7	Document-88: [No title], S1	06.05.2013 08:39:45	45828.581
8	Document-89: [No title], S1	06.05.2013 08:39:45	44378.116
9	Document-90: [No title], S1	06.05.2013 08:39:45	45499.978
10	Document-91: [No title], S1	06.05.2013 08:39:45	44089.729
11	Document-92: [No title], S1	06.05.2013 08:39:45	42924.431
12	Document-93: [No title], S1	06.05.2013 08:39:45	42454.850
13	Document-94: [No title], S1	06.05.2013 08:39:45	45828.581
14	Document-95: [No title], S1	06.05.2013 08:39:45	45566.854
15	Document-96: [No title], S1	06.05.2013 08:39:45	45280.546
16	Document-97: [No title], S1	06.05.2013 08:39:45	45350.594
17	Document-98: [No title], S1	06.05.2013 08:39:45	45804.209
18	Document-99: [No title], S1	06.05.2013 08:39:45	45270.689
19	Document-100: [No title], S1	06.05.2013 08:39:45	46056.261
20	Document-101: [No title], S1	06.05.2013 08:39:45	46158.634
21	Document-102: [No title], S1	06.05.2013 08:39:45	48736.647
22	Document-103: [No title], S1	06.05.2013 08:39:45	47712.791
23	Document-104: [No title], S1	06.05.2013 08:39:45	47984.173
24	Document-105: [No title], S1	06.05.2013 08:39:45	50218.760

Index	Lower Asymptote (D)	Slope (B)	Inflection Point (C)
1	3834.3689	-2.04854	-1.09044
2	4038.4708	-1.98184	-1.15687
3	4383.7142	-1.80160	-1.03926
4	4715.4377	-1.90455	-1.03075
5	4688.3254	-1.82436	-1.06519
6	4306.9880	-1.79433	-1.05513
7	3591.5949	-2.07333	-1.05194
8	3925.6336	-2.27932	-1.07089
9	3558.4469	-2.16157	-0.94393
10	3566.5281	-2.25047	-0.98111
11	3019.7377	-2.11920	-1.12786
12	3196.1250	-2.34585	-1.05630
13	3591.5949	-2.07333	-1.05194
14	2681.5679	-1.96590	-1.10067
15	3345.8489	-2.34348	-1.13278
16	3324.5428	-2.13563	-1.22075
17	3361.2838	-2.06864	-1.09519
18	4060.9214	-2.51099	-1.07416
19	3265.8849	-2.01040	-1.13449
20	3751.7844	-2.17469	-1.13051
21	3790.2700	-2.03939	-1.17491
22	3693.3282	-2.11955	-1.16523
23	3928.0544	-2.30496	-1.07734
24	3211.3341	-1.91502	-1.14885