

Biacore™ Data Acquisition Module

OVERVIEW

Abstract

The PLA 3.0 Data Acquisition Module for Biacore (belonging to GE Healthcare) enables users to import measurement values and additional information from Biacore's T100/T200 XML files into biological assays for further analysis.

Features

- Fast, secure and reliable data import from otherwise difficult-to-read XML files.
- Imported data can be pre-filtered (e.g. by concentration or cycle).
- Additional data can be imported along with measurement values (e.g. position).

- All imported data is fully retraceable (audit trail).

More information on PLA 3.0 Data Acquisition Modules:

www.bioassay.de/data-acquisition

TECHNICAL SPECIFICATION

Type

Data Acquisition Module

Version

Version 1.1.0 Build 12
(downgrade rights included)

System Requirements

- PLA 3.0.4
- Bioassay Package 23 or higher

Supported Systems

- GE Healthcare Biacore T100
- GE Healthcare Biacore T200

Supported File Formats

- .xml

Supported Languages

English, German

DELIVERY AND SUPPORT

Release Date

June 6, 2016

Product No.

24036

Scope of Delivery

- Software (CD or download)
- User manual (PDF)

Lifecycle

We will provide support for PLA 3.0 and all related modules until March 15, 2024.

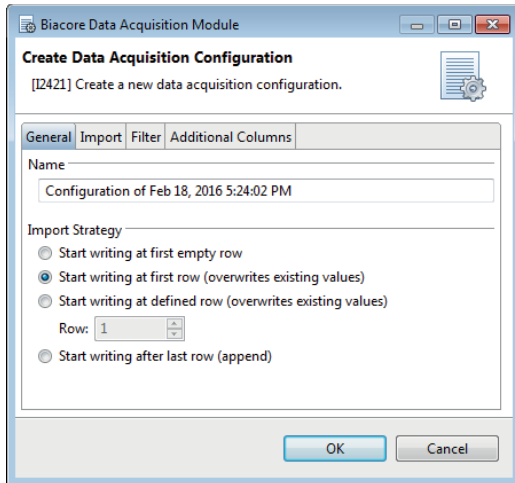
Support and Upgrades

You have access to our PLA support platform at: support.bioassay.de

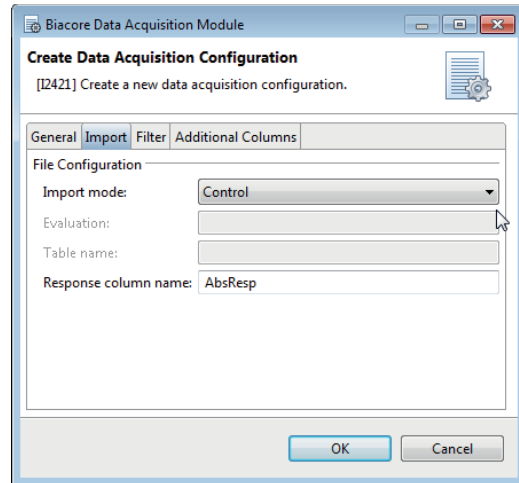
This module is covered by our PLA Support Contract. The first year is included and the contract can be renewed year by year. To find out more about its benefits, please go to: www.bioassay.de/support-contract

SCREENSHOTS

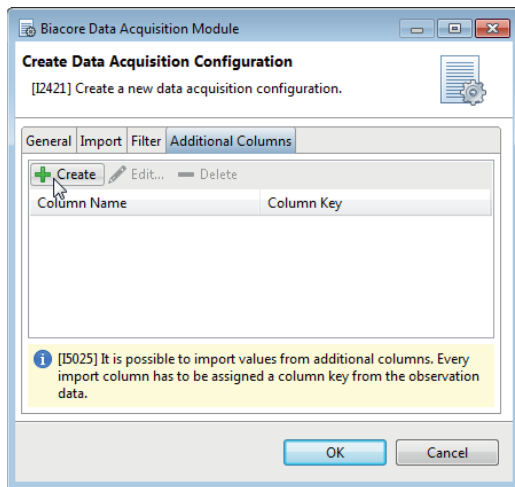
Creating a data acquisition configuration.



Selecting the import mode.



Creating additional columns.



Successful acquisition of Biacore measurement values.

