

CombiStats™ Import Module

OVERVIEW

Abstract

The PLA 3.0 Document Import Module for CombiStats enables users to import documents from CombiStats into PLA 3.0 for further analysis. CombiStats is provided by the EDQM.

Features

- Fast, secure and reliable data import of CombiStats documents.
- Import as Quantitative Response Assays or Dichotomous Assays.
- CombiStats templates are also supported.
- All imported data is fully retraceable (audit trail).

TECHNICAL SPECIFICATION

Type

Document Import Module

Version

Version 1.0.0 Build 54

System Requirements

- PLA 3.0.3
- Bioassay Package 18 or higher

Supported Systems

- CombiStats 5.0

Supported File Formats

- .epa
- .epm

Supported Languages

English, German

DELIVERY AND SUPPORT

Release Date

June 27, 2015

Product No.

24039

Scope of Delivery

- Software (CD or download)
- User manual (PDF)

Lifecycle

We will provide support for PLA 3.0 and all related modules until March 15, 2024.

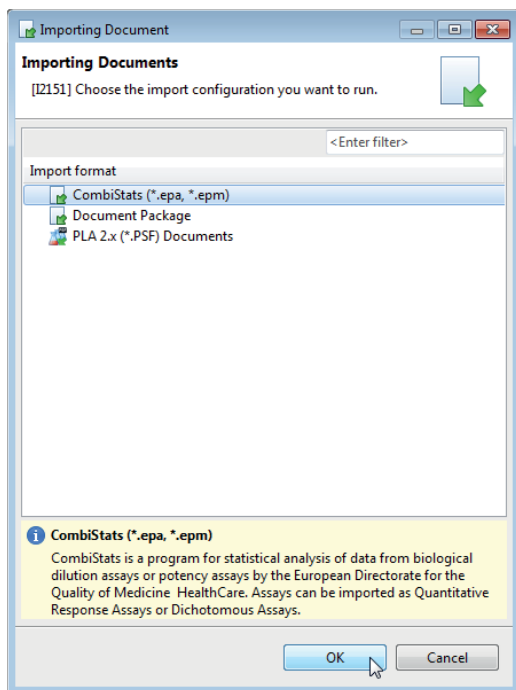
Support and Upgrades

You have access to our PLA support platform at: support.bioassay.de

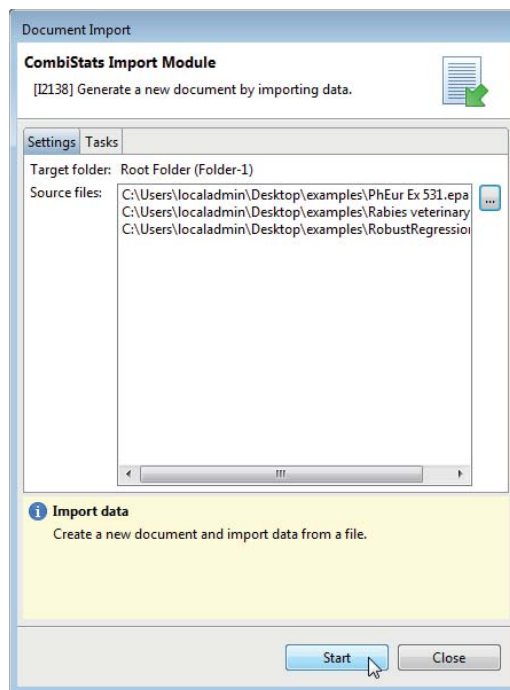
This module is covered by our PLA Support Contract. The first year is included and the contract can be renewed year by year. To find out more about its benefits, please go to: www.bioassay.de/support-contract

SCREENSHOTS

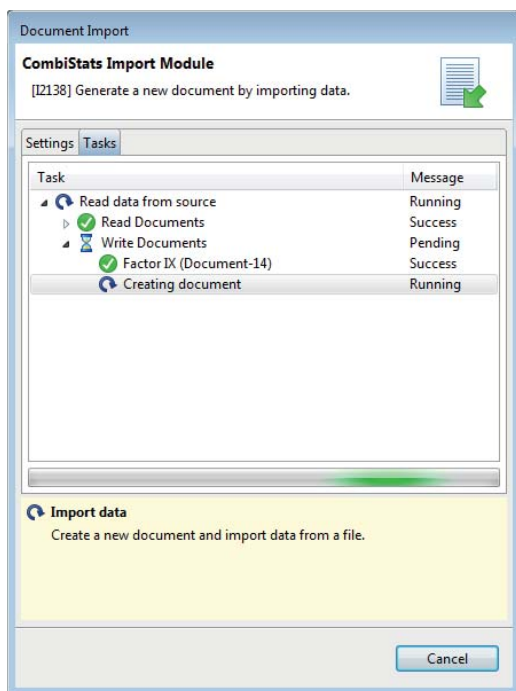
Choosing the import configuration.



Selecting the source file.



Running the document import.



Successful import of a CombiStats document.

